

# Professional Futures Trader – Reference Guide

## Futures Selection for Income

### Ideal Requirements for a proper WatchList

Criteria	Requirement
Average Daily Volume (ADV)	≥ 80k contracts/day*
Open Interest	≥ 60k contracts/day**
Spread	Spread ≤ 2 Ticks
25% (Daily ATR x Point Value)	> Daily Goal per Contract
50% Account Size	> Margin Required per Contract

\*80,000 contracts a day is ideal, but 40,000 is adequate  
 \*\*60,000 contracts a day is ideal, but 30,000 is adequate

## Trader Time Zones

### Equity Index Group

Markets	Continuous Symbol	Contract Months	Minimum Tick Value	Times
S&P 500	@ES=107XN	H, M, U, Z	\$12.50	6:00pm – 5:15pm ET
NASDAQ 100	@NQ=107XN	H, M, U, Z	\$5	6:00pm – 5:15pm ET
Dow	@YM=107XN	H, M, U, Z	\$5	6:00pm – 5:15pm ET
Russell 2000	@TF=107XN	H, M, U, Z	\$10	8:00pm – 6:00pm ET
Euro Stoxx 50	@FESX=101XN	H, M, U, Z	10€	2:00am – 4:00pm ET
German DAX	@DAX=101XN	H, M, U, Z	12.50€	2:00am – 4:00pm ET
Nikkei 225	@NK=103XN	H, M, U, Z	US\$25	6:00pm – 5:15pm ET

### Agriculture/Soft Group

Market	Continuous Symbol	Contract Months	Minimum Tick Value	Times
Corn	@C=110XN+HKNZ	H, K, N, U, Z	\$12.50	8:00pm – 2:15pm ET
Wheat	@W=110XN	H, K, N, U, Z	\$12.50	8:00pm – 2:15pm ET
Soybeans	@S=110XN+FHKNX	F, H, K, N, Q, U, X	\$12.50	8:00pm – 2:15pm ET
Live Cattle	@LC=117XN	G, J, M, Q, V, Z	\$10	9:00am – 5:00pm ET
Lean Hogs	@LH=109XN+GJMQVZ	G, J, K, M, N, Q, V, Z	\$10	9:00am – 5:00pm ET
Coffee	@KC=120XN	H, K, N, U, Z	\$18.75	4:15am – 1:30pm ET
Cocoa	@CC=120XN	H, K, N, U, Z	\$10	4:45am – 1:30pm ET
Cotton	@CT=110XN+HKNZ	H, K, N, V, Z	\$5	9:00pm – 2:20pm ET
Sugar #11	@SB=110XN	H, K, N, V	\$11.20	3:30am – 1:00pm ET

### Energies and Metals Group

Energies	Continuous Symbol	Contract Months	Minimum Tick Value	Times
Crude Oil	@CL=103XN	ALL	\$10	6:00pm – 5:15pm ET
Natural Gas	@NG=103XN	ALL	\$10	6:00pm – 5:15pm ET
Metals	Symbol	Contract Months	Tick Value	Times
Gold	@GC=120XN+GJMQZ	G, J, M, Q, V, Z	\$10	6:00pm – 5:15pm ET
Silver	@SI=120XN+HKNUZ	H, K, N, U, Z	\$25	6:00pm – 5:15pm ET
Copper	@HG=120XN	H, K, N, U, Z	\$12.50	6:00pm – 5:15pm ET

## Futures Selection for Wealth

### Ideal Requirements for a proper WatchList

Criteria	Requirement
Average Daily Volume (ADV)	≥ 5k contracts/day
Open Interest	≥ 5k contracts/day
Spread	Spread ≤ 5 Ticks
50% Account Size	> Margin Required per Contract

### Interest Rate Group

Markets	Continuous Symbol	Contract Months	Minimum Tick Value	Times
5 Year Note	@FV=123XN	H, M, U, Z	\$7.82	6:00pm – 5:00pm ET
10 Year Note	@TY=114XN	H, M, U, Z	\$15.63	6:00pm – 5:00pm ET
30 Year Bond	@US=114XN	H, M, U, Z	\$31.25	6:00pm – 5:00pm ET
Bobl (30 yr)	@FGBM=101XN	H, M, U, Z	10€	2:00am – 4:00pm ET
Bund (10 yr)	@FGBL=101XN	H, M, U, Z	10€	2:00am – 4:00pm ET

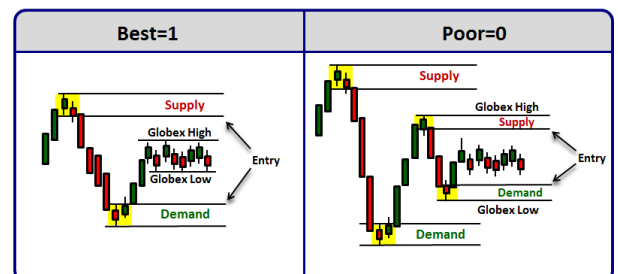
### Currencies Group

Market	Continuous Symbol	Contract Months	Minimum Tick Value	Times
Euro	@EC=103XN	H, M, U, Z	\$12.50	6:00pm – 5:00pm ET
Yen	@JY=103XN	H, M, U, Z	\$6.25	6:00pm – 5:00pm ET
Franc	@SF=103XN	H, M, U, Z	\$12.50	6:00pm – 5:00pm ET
British Pound	@BP=103XN	H, M, U, Z	\$6.25	6:00pm – 5:00pm ET
Aussie Dollar	@AD=103XN	H, M, U, Z	\$10.00	6:00pm – 5:00pm ET
Canadian Dollar	@CD=103XN	H, M, U, Z	\$10.00	6:00pm – 5:00pm ET
US Dollar	@DX=103XN	H, M, U, Z	\$5.00	8:00pm – 5:00pm ET

## Odds Enhancers

### Odds Enhancer “Globex Trap”

Is the Zone beyond the Globex High or Low?



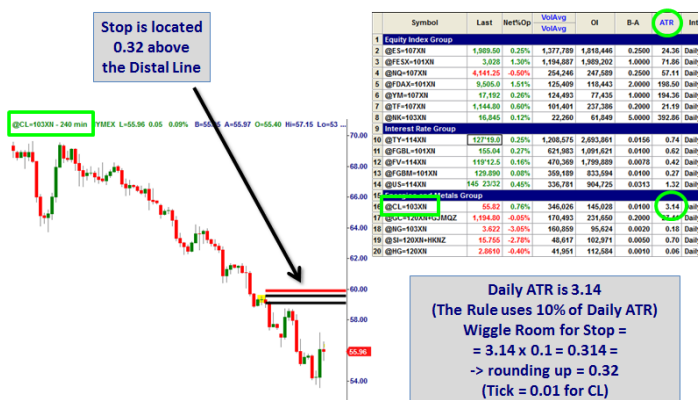
Lesson: When an Equity Index Futures is entering a Supply zone located above the Globex High or entering a Demand zone located below the Globex Low, the probability for the Trade to work is higher

## Risk Management

### Income Wiggle Room for Stops



### Wealth Wiggle Room for Stops



## Bracket Orders

### Bracket Order Application Summary

S.E.T. Summary: **Buy**

<b>Profit Target</b>	<ul style="list-style-type: none"> <li>Sell Limit</li> <li>Above current price</li> </ul>
<b>Entry</b>	<ul style="list-style-type: none"> <li>Buy at Market or Limit</li> <li>At or below current price</li> </ul>
<b>Stop</b>	<ul style="list-style-type: none"> <li>Sell Stop Market</li> <li>Below current price</li> </ul>

S.E.T. Summary: **Sell**

<b>Stop</b>	<ul style="list-style-type: none"> <li>Buy Stop Market</li> <li>Above current price</li> </ul>
<b>Entry</b>	<ul style="list-style-type: none"> <li>Short at Market or Limit</li> <li>At or above current price</li> </ul>
<b>Profit Target</b>	<ul style="list-style-type: none"> <li>Buy Limit</li> <li>Below current price</li> </ul>

### Matrix (Adjusting Stop or Target)

1 Take your cursor arrow and place over your gray stop box.

2 Hold down left side of mouse and drag down to the new stop price, then release mouse button.

### Bracket Order: **Buy**

### Bracket Order: **Sell**

## Position Size

### Position Size

**STEP 1** Maximum Risk Amount

$\$100,000 \times 1\% = \$1,000$

**STEP 2** Calculate Stop Size x Tick Value

$\$225 \times 18 \text{ Ticks} = \$4,050$

**STEP 3** Calculate and Round Down Maximum Position Size

$\$1,000 / 225 = 4 \text{ Contracts}$

## Student Support

### Customer Care Team

Performing Technical Support

Toll Free: 866-939-4958  
Direct: 949-608-7424  
Hours: Monday – Friday  
6am – 5pm PST/PDT

Our **Live Chat** support personnel are available to assist you Mon-Fri at 8am – 5pm PST/PDT

help@tradingacademy.com

### Subject Matter Experts

Replying to your trading-related e-mails

You will receive a response within 48 hours upon receipt (excluding weekends)

Be sure to include "SME" in the subject line of the e-mail to insure that your e-mail will be routed efficiently. Feel free to provide additional description in the subject line.

help@tradingacademy.com

### Student Support Specialist

Focusing on Student Assistance and Accountability

Online Trading Academy Locations Worldwide

Worldwide
USA
Canada
Europe
Middle East
Asia

help@tradingacademy.com